

Inside

The Promise of Children

Quality Character

After-School Volunteers

Meet Will Hope

Open House

Count On Me!

414.385.2233

Fax 414.385.2230

As of August 15:

414.760.0334

Fax 414.760.0399

www.tmoc.org

email: tmoc@tmoc.org

724 S. Layton Blvd.
Milwaukee, WI 53215

Address Service Requested

NON-PROFIT ORG.
U.S. POSTAGE
PAID
MILWAUKEE, WI
PERMIT NO. 5116

The Milwaukee Outreach Center



AUGUST 2005

The Milwaukee
OUTREACH CENTER



Michael Rintelman
Executive Director

Executive Director's Update

The other day my son, who is seven, called me at the office to tell me that he was going to move out of the house because the temperature of our home was not to his liking. Upstairs was too hot and downstairs was too cold. When I asked what he planned to take with him on this venture, he replied that he had packed about 50 of his favorite

videos and his ceramic fish garbage can. I could tell that he was not ready to face life, even if he could find a more climate-controlled environment.

In October of 2003 I had the privilege of being invited to a summit on developing overcoming children. As a result of those meetings in Seattle, I started to research factors that facilitate an overcoming child. Soon I was in contact with the Search Institute in Minneapolis. They had completed extensive research on children and adolescents and had identified 40 assets that reflect character formation and development. They noticed that the greater number of assets present in a child's life enabled that child to be a well-adjusted contributor to society.

This research is very exciting but we had one question: Is it biblical? In February of 2004 we set out to write a character development curriculum for three age groups using the 40 developmental assets. One of the first things we did was to identify and analyze specific biblical passages for each character asset and incorporate theological underpinnings for the 20 external assets.

Since then we have completed the first part of our project. This curriculum is for (but not limited to) children and youth living in urban communities. Consistent with the core values of TMOC, the curriculum is thoroughly biblical and Christian in its scope and reach. We were able launch three after-school programs at three sites in Milwaukee beginning September, 2004 and ending in May, 2005. At the end of the school year an exit questionnaire was given to two of the three sites and results from the student handbooks were tabulated.

Why are we going to all this trouble? We believe that our children are worth the investment. Scripture tells us, "Train up a child in the way he should go..." (Proverbs 22:6). Using character building skills based upon the truth of Scripture, our vision is to provide the tools necessary so every child can become a thriving and overcoming child.



The Milwaukee Outreach Center is preparing to launch its fall after-school character development programs. Volunteers are needed so give us a call.

The Promise of Children

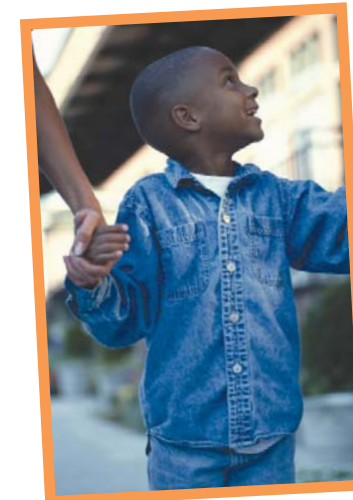
The well-being of children in Milwaukee and other cities is the focal point of this month's newsletter. In Scripture we are told to "seek the well-being of the city" (Jeremiah 29:7). We know that when we are seeking the well-being of children we are also seeking the well-being of our city.

A few years ago Professor Maureen Kenny of Boston College completed a four-year study on the resilience of youth in the inner-city. Her study inquired about the effect of an enrichment program upon the academic success and sense of well-being of 100 high-risk adolescents. One of the significant findings of this study addressed the power of supportive family relationships. Other adults such as a Sunday school teacher, educator, clergy or school counselor were also mentioned as vitally important, but much less often than actual family members.

This study set out to prepare urban public school students for college admissions. Two Saturdays each month students from diverse ethnic and cultural backgrounds attended classes on a college campus. When strong bonds of attachment occurred between child and parents (as well as with other meaningful adults), the child was able to demonstrate academic achievement, have a decrease in anxiety, stress and depression, and resist inner-city pressures. In fact, seniors in the study attended 94 percent of all school days over four years of high school and graduated with a cumulative 3.0 grade point average. They also exhibited qualities of becoming well-adjusted adults.

The lessons from research on successful children show that when there are wholesome relationships with parents and other adults, at-risk children are able to overcome the cycle of poverty. Even when there are adverse setbacks of parents losing their jobs, or health problems or a death in the family, because of strong relationships, children become resilient.

Every week our counseling and work adjustment programs deal with the effects of failed family structures and poverty. We are actively involved in child enrichment through our after-school (and Saturday) character development program. You may be just the person God is looking for to be a significant adult for the well-being of a child. Our program is a wonderful opportunity for you and your church to love God and your neighbor – especially the children.



Child development and character development are part of the life skills and life enrichment programs of The Milwaukee Outreach Center.

Quality Character

Character development is taking well-planned steps of faith in order to be a positive and lasting influence upon children and their families. The Milwaukee Outreach Center's character development programs educate children, youth and adults to become healthy, caring and responsible individuals.

The first part of the program is for students in third to fifth grades and includes a Bible lesson, an arts activity and take-home activities for child and parent. The program can be used in an after-school setting or as a Saturday school outreach as well as a Sunday school class or a Wednesday night program.

Using the curriculum requires people with teaching skills who are consistent and organized. It works best when there is a team of five volunteers and there is a heart for reaching children with the Gospel of Christ. This is a very enriching journey of shaping and forming character.

After-School Volunteers

We are looking for five character development sites and five teams of volunteers for this fall. Many of our inner-city churches do not have the necessary volunteers to launch a character development program. We will train your team and assign you to a site.

Each team consists of five members: two lead teachers, one arts teacher, one record keep and curriculum manager, and one swing person. Please call TMOC at 414-760-0334 or check the Count On Me box if you would like to be a team member or be a host site. This program requires a one and one-half hour commitment once a week for 15 weeks. Three hours of training will be conducted in August and again in September. The 2005-2006 program begins the last week of September.

Open House

You are invited to an open house to celebrate our new facilities.

Monday - September 19, 2005
3:00 – 8:00 PM

Refreshments and Tours

New Address and Phone Number

As of August 15, the new address and phone number of The Milwaukee Outreach Center will be:

The Milwaukee Outreach Center
6647 W. Mill Road
Milwaukee, WI 53218

414.760.0334
414.760.0399 (FAX)



Golf Scramble – August 24, 2005

It's not too late to sign up for this year's golf scramble. The Evergreen Golf Course is one of the top rated public courses in southern Wisconsin. Located in Elkhorn (40 miles southwest of Milwaukee), it features 27 championship holes that are located on scenic rolling terrain. It offers a challenge and fun experience for all skill levels.

What You Can Do:

1. Find four serious (or not so serious) golfers. Sign up early.
2. Sponsor a foursome for \$400 which includes 18 holes of golf, a cart and a deluxe cookout.
3. Have your organization, business or vendor sponsor a hole with corporate logo for \$150.
4. Be a coordinator for prizes and awards.



The Evergreen Golf Club is the course for TMOC's 2005 Golf Scramble on Wednesday, August 24.

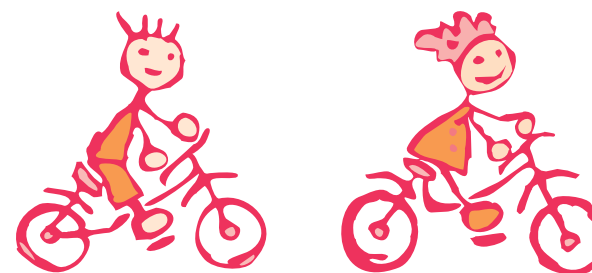


This is a shotgun start followed by a deluxe cookout and prizes. Register online at www.acteva.com/booking.cfm?bevoid=87203. You can also call (414) 385-2233.

Count On Me!

Today I'm enclosing:

- My monthly commitment of \$ _____
- A special offering for _____ \$ _____



I would like...

- to volunteer for your character development program
- to host a character development program through our church
- to attend the Phoenix Life Skills program (September 12-16)
- information about hosting a Phoenix Life Skills program at my church
- to schedule TMOC at our missions fair/conference
- to visit with a Christian counselor



Meet

Will Hope - Director of Development

This month we want you to meet another great team member of The Milwaukee Outreach Center (TMOC). Every month you see Will Hope's work as the editor of this newsletter. But there's more to the story.

About 18 months ago Hope was going through a major interruption in his life. Michael Rintelman, TMOC's executive director, found out about this and invited him to lunch. "I simply wanted to be a blessing to Will and let him know that I cared about him," said Rintelman. Before lunch was over, they found themselves talking about reaching children and parents through character development programs.

Today Hope serves as director of development and general editor of TMOC's character development curriculum. He is an Assemblies of God home missionary assigned to TMOC for urban outreach and ministry. He brings 18 years of pastoral ministry and 10 years of urban education to his position. At heart he is an evangelist and educator.

One of the great strengths of Hope's life is his wife, Jackie and their three children. Tirza, their oldest daughter, is married and serves with her husband as youth pastors in Minnesota. Titus is also married and is an operations manager for a catering company in New Orleans. Elisa is home for the summer and in the fall she will be a sophomore at Bethel College in Indiana.

Sometimes around the office you will hear someone asking for "Dr. Hope." He is a graduate of Oral Roberts University (D.Min.), Bethel Theological Seminary (M.Div.) and Bemidji State University (B.S.). Please save this feature and remember Will and his family in your prayers.



Winning others to Christ is a passion of Will Hope (center) as he preaches on the south side of Milwaukee.



An avid sports enthusiast, golf is not Will Hope's game. Tennis is his specialty. (Left: Will Hope. Right: Tim Ryder, associate pastor of Elmbrook Church.)



This spring Drs. Reuben Sequeira (left) and Will Hope (right) were guest professors at Latvia Bible College in this former communist state. They are accompanied by students and pastors who completed the course in Bible and missions.